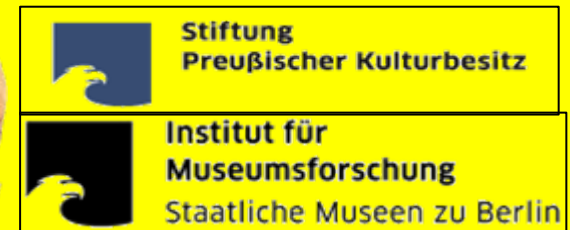


# Dokumentation digitaler Sammlungen

## Sammlungsidentifizierung

Giuliana De Francesco  
MiBAC ICCU – IfM PK

IDENTITY CARD	
Sammlung ID	
Name	
Beschreibung	
Museum	
Verknüpfung	
	
OFFICIAL DOCUMENT	



# Die Neuigkeit



International  
Organization for  
Standardization

International Standards for Business, Government and Society

Search >>

Home **Products** Standards development News and media About ISO For ISO Members FAQs Fr | Ru ISO Store

Products > ISO Standards > By TC > TC 46 Information and documentation > SC 9

ISO Store

ISO Standards

By ICS

>>By TC

How to use the ISO  
Catalogue

Standards in action

Management and  
leadership standards

The ISO portfolio

FAQs

Country codes (ISO)

31

Di

st

Put

ISC

(IS

Co)

## ISO 27730

Information and documentation -- International standard collection identifier (ISCI)

### General information

Number of Pages: 10

Edition: 1 (Monolingual)

Status: Under development

TC/SC: TC 46/SC 9

ICS: [01.140.20](#)

Stage: [60.00](#) (2011-09-21)

### These standards could also interest you

- [ISO 25964-1:2011](#)  
Information and documentation --  
Thesauri and interoperability with  
other vocabularies -- Part 1:  
Thesauri for information retrieval
- [ISO 690:2010](#)  
Information and documentation --  
Guidelines for bibliographic  
references and citations to  
information resources

50 Approval stage	50.00 FDIS registered for formal approval	50.20 FDIS ballot initiated: 2 <i>months</i> . Proof sent to secretariat	50.60 Close of voting. Proof returned by secretariat	50.92 FDIS referred back to TC or SC		50.98 Project deleted	50.99 FDIS approved for publication
60 Publication stage	60.00 International Standard under publication		60.60 International Standard published				

# International Standard Collection Identifier

- **ISO 27330** entwickelt von ISO TC 46 *Information and documentation, SC 9, Identification and description*
- Ein System zur eindeutigen Identifizierung für **Sammlungen**, Fonds und Serien und Teilen von Sammlungen, Fonds und Serien
- Basiert auf:
  - **ISIL (ISO 15511)**
  - **URI (IETF RFC 3986)**
- Verwendbar von Organisationen, die Sammlungen verwalten, wie z.B. Bibliotheken, Archiven und Museen



# ISCI:

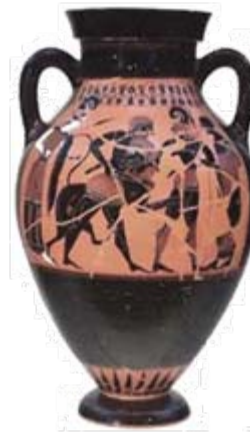
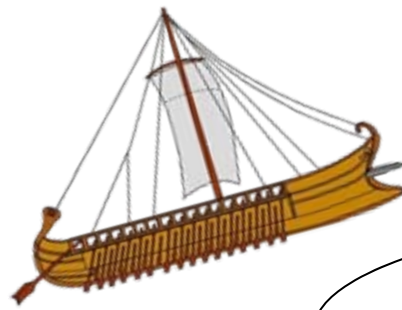
ISIL der Organisation

+

Collection Identifier String  
(spezifisch für jede Einrichtung)



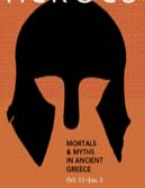
Jede Sammlung muss auch beschrieben werden



<http://www.flickr.com/photos/fitzgabbro/5950841347/>

<http://picasaweb.google.com/basiainlondon/CoventGardenBritishMuseum#5124951721253915522>

# HEROES



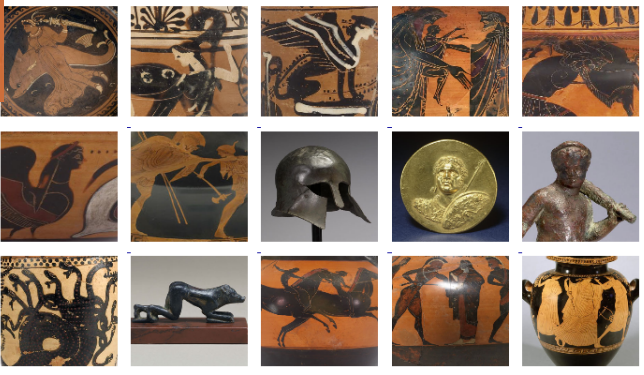
Heroes: Mortals and Myths in Ancient Greece is an international loan exhibition organized by the Walters Art Museum. What makes a person a hero or heroine? This exhibition explores the human need for heroes through the arts of one of the oldest and most influential cultures in history. Heroes are sometimes portrayed as superhuman protagonists while at other times as average people who rise above the ordinary. Clashes, trials, tests, losses and victory illustrate the lives of heroes and heroines, including their needs, adventures, challenges, failures and private moments. The exhibition features over 100 objects from U.S. and European museums as well as pieces from the Walters' collection.

Admission is Free!

Home About The Heroes Images Events Resources Which Hero Are You? Who is Your Hero?

## Image Gallery

These images represent just a few of the objects on display in the exhibition entitled *Heroes: Mortals and Myths in Ancient Greece*. Click on a detail image to open the slideshow. Use arrow keys or your mouse to navigate the slideshow.



Want more? Browse [The Walters Art Museum's online collection of Ancient Greek art.](#)

Home About The Heroes Images Events Resources Which Hero Are You? Who is Your Hero?

# CORPUS VASORUM ANTIQUORUM

<http://www.cvaonline.org/>

### Amphorae



The *amphora* is a two-handled pot with a neck that is considerably narrower than the body. Coarse *amphorae* were the standard containers for transporting oil and wine. Panathenaic *amphorae*, were presented as prizes in the Panathenaic Games. They contained oil for the victors.

The belly *amphora* (Type B) has a continuous profile from lip to foot. The mouth has a straight lip, the foot is in one part and has a convex (echinus) profile. The handles are round. An old shape, it continued to be made until the mid-fifth century. Type A is a more elaborate version of the belly *amphora* which was introduced soon after 550. The handles are flanged, flat and decorated (y-y pattern). The foot is in two parts. Type C is a less common version with a round mouth and a foot in one part.

Examples of the Panathenaic *amphora* are known from about 560 to the second century BC or later. The shape changes little and the decoration remains as black-figure. Characteristic features are the broad body, narrow neck and foot. Many full-sized *amphorae* of Panathenaic shape, and miniatures, were souvenirs rather than prizes. In the late sixth and early fifth centuries the shape was decorated in red-figure in Athens. In the fourth century painters in South Italy introduced a more elaborate form.

*Amphora* (Greek *amphoreus*, '-carried on both sides')



Athenian amphora ht. 37cm. (Type B)



Athenian amphora ht. 46cm. (Type A)



Athenian amphora ht. 49.5cm. Panathenaic shape



**Objekte gehören zu Gruppen**

**Sammlungen haben Geschichte**

**Sammlungen erzählen Geschichten**

**Sammlungen sind Kontext**

**Kontext IST was zählt!**

Collection-level description  
(Sammlungsbeschreibung)

Beschreibung der Sammlung  
**als Ganzes**



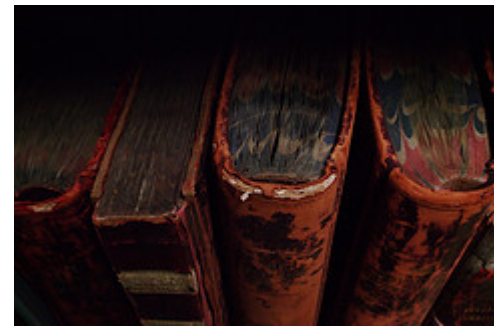


***Wald oder  
Bäume?***

# Collection-level description

Beschreibung der Sammlung **als Ganzes**

- Eine gängige Praxis





Die Sammlungen des  
Landesmuseums Mainz

Vorgeschichte

Römer

Frühes Mittelalter

Hohes und Spätes  
Mittelalter

Renaissance

Niederländische Malerei

Mainzer Barock

Goethezeit und  
Biedermeier

Romantik und Historismus

Judaica

Die Graphische Sammlung

Kunst um 1900

Jugendstil

Kunst der Moderne

Die Prinz Johann Georg-  
Sammlung

## Die Prinz Johann Georg-Sammlung "Sammler, Pilger, Wegbereiter"



### Diese Abteilung ist wegen Umbaumaßnahmen geschlossen!

Der Wettiner Prinz Johann Georg, Herzog zu Sachsen, wurde am 10. Juli 1869 in Dresden als zweiter Sohn des Prinzen Georg geboren. Sein Bruder Friedrich August war der letzte regierende König von Sachsen. Sein großes Kunstinteresse veranlasste den Prinzen zahlreiche Reisen zu unternehmen, die ihn vor allem in die europäischen Nachbarländer, in den Nahen Osten und nach Ägypten führten. Auf all seinen Reisen erwarb er zahlreiche Kunstwerke, aber auch Gegenstände des Alltags.

Im Jahre 1898 reiste Johann Georg nach Russland, um die Kunstschatze der Kirchen und Klöster zu studieren. Auch Griechenland und der Vordere Orient waren für ihn von besonderem Interesse, so besuchte er die Museen und Sammlungen in Athen, Konstantinopel und Jerusalem. Ab 1910 bereiste Prinz Johann Georg Syrien, Palästina, den Sinai und mehrfach Ägypten. Zahlreiche Aegyptiaca bilden einen wesentlichen Bestandteil seiner Sammlung, darunter verschiedene pharaonenzeitliche und ptolemäische Steindenkmäler, Uschebtfiguren, Terrakotten und Gläser. Hervorzuheben sind besonders die Mumienkartonagen und Mumienportraits. Der spätantiken, byzantinischen und frühislamischen Zeit gehören koptische Plastiken aus Holz und Stein, Weihrauchgefäße, Menasampullen, Brotstempel, Lampen, Kreuze, silbernes und bronzenes Kultgerät orthodoxer Kirchen an sowie koptische Textilien.

Seine Liebe gehörte aber auch stets den Ikonen, die Prinz Johann Georg in Russland, Griechenland, Konstantinopel, Kreta, Palästina, Ägypten und Italien zusammengetragen hatte. Die Sammlung umfasst etwa 150 Ikonen, die zwischen dem 15. und 19. Jahrhundert entstanden. Neben diesen beiden Schwerpunkten enthält die Prinz Johann Georg-Sammlung auch Terrakotten, schwarz- und rotfigurig bemalte Vasen aus Griechenland, Grabreliefs aus Palmyra, verschiedene mittelalterliche Steindenkmäler sowie kunsthandwerkliche Gegenstände mit christlicher Thematik aus dem 17. bis 19. Jahrhundert. Ursprünglich befanden sich auch zahllose Aquarelle und Handzeichnungen überwiegend des 19. Jahrhunderts in der Sammlung, die jedoch bereits kurz nach dem Tod des Prinzen veräußert worden waren.

Prinz Johann Georg war jedoch nicht nur ein leidenschaftlicher Sammler, sein Interesse galt darüber hinaus auch der wissenschaftlichen Bearbeitung der

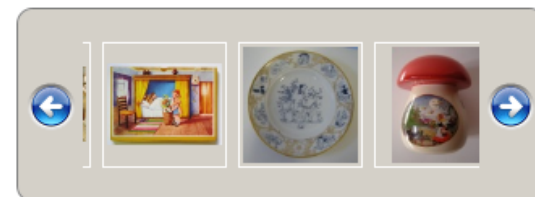
suchen

» Deutsches Märchen- und Wesersagenmuseum

### SAMMLUNG: "MÄRCHENOBJEKTE"

Die Sammlung an Märchenobjekten geht zurück auf die private Märchensammlung von Dr. Karl Paetow (1903-1992). Seit Eröffnung des Museums 1973 wurde die Sammlung durch Schenkungen und Ankäufe ergänzt. Die Sammlungen sind kulturhistorisch orientiert. Gesammelt werden alle Bereiche des visualisierten Märchens vom Märchenbild über das Märchenbuch und die Märchenfigur bis hin zu Bearbeitungen von Märchen und Märchenmotiven in der bildenden Kunst.

Bei der Sammlung stehen Bilder und Objekte zum Thema Märchen aus heutiger Sicht im Vordergrund, sei es nun der Text einer Märchenpersiflage, das vielleicht eher abstrakte Bild eines



schönen, farbigen, kleinen, die Verwendung eines Schabkloßes, oder das Bild einer Bettenszene mit Frau und Kind darauf. Alle diese Dinge sind handgefertigt

museum-digital



suchen

» Alte Synagoge Erfurt

### SAMMLUNG: "DER ERFURTER SCHATZ"

Im Keller des Museums Alte Synagoge wird ein Schatz ausgestellt, der vor dem Hintergrund des Pogroms von 1349 vergraben wurde und in Umfang und Zusammensetzung weltweit einmalig ist. Der Schatz wurde 1998 bei archäologischen Untersuchungen in unmittelbarer Nachbarschaft der Synagoge auf dem Grundstück Michaelisstraße 43 entdeckt. Er war unter der Mauer eines Kellerzuganges eingegraben. Dieser Keller ist heute Teil eines

museum-digital

suchen

» Fahrzeugmuseum Staßfurt

### SAMMLUNG: "MZ - FAHRZEUGE BIS ZUM BAUJAHR 1989 "

Diese Teilsammlung umfasst Motorräder aus den Baujahren 1950 bis 1989. Bemerkenswert aus heutiger Sicht ist es, das innerhalb dieser Baujahre enorme Stückzahlen der produzierten Motorradtypen erreicht wurden. >

Die MZ-Modelle ab dem Baujahr 1990 sowie die MZ-Einsatzfahrzeuge aus der Produktion des Zschopauer Motorradwerks für NVA, Polizei, DRK, GST und andere Dienststellen werden in eigenen Teilsammlungen aufgeführt.



» Objekte aus der Sammlung: "MZ - Fahrzeuge bis zum Baujahr 1989 " anzeigen [38] » durchsuchen

» Alle Objekte des Museums in dieser Datenbank anzeigen [561] » durchsuchen

» Fahrzeugmuseum Staßfurt in dieser Datenbank

museum-digital



Sachsen - Anhalt

## Cataloghi

- [Ricerca biblioteca](#)
- [Schede catalografiche](#)
  - [Ricerca semplice](#)
  - [Ricerca avanzata](#)

## Area riservata

## Scheda Fondo

**Biblioteca** Roma, Biblioteca Angelica

**Nome del fondo** Manoscritti orientali

**Storia del fondo**

- La biblioteca prima della biblioteca. Elementi per una protostoria dell'Angelica

Ove si voglia delineare una pur incerta protostoria dell'Angelica, sono due inventari quattrocenteschi, rispettivamente del 1432 e del 1478, le uniche fonti che documentino l'accrescimento del patrimonio librario della biblioteca del convento di Sant'Agostino.

Delle 671 notizie relative a manoscritti conservati nella biblioteca conventuale di S. Agostino nel 1432 pochissime sono quelle relative a volumi ancora oggi identificabili come facenti parte del patrimonio della Biblioteca: gli Ang. lat. 150-151, l'Ang. lat. 768, l'Ang. lat. 1903. Ben 981 sono invece le notizie relative a manoscritti e incunaboli registrati nell'inventario del 1478. Anche in questo inventario sono stati riconosciuti relativamente pochi manoscritti ancora all'Angelica: Ang. lat. 52 ovvero 488, Ang. lat. 62, Ang. lat. 76, Ang. lat. 98, Ang. lat. 143, Ang. lat. 161, Ang. lat. 204, Ang. lat. 218, Ang. lat. 224, forse Ang. lat. 296, Ang. lat. 338 ovvero Ang. lat. 1088, Ang. lat. 371-374, forse Ang. lat. 413, Ang. lat. 417, Ang. lat. 522, forse Ang. lat. 533, forse Ang. lat. 560, Ang. lat. 577, Ang. lat. 579, Ang. lat. 581, Ang. lat. 596, Ang. lat. 603, Ang. lat. 626, forse Ang. lat. 808, forse Ang. lat. 967, Ang. lat. 1010, Ang. lat. 1037, Ang. lat. 1097, Ang. lat. 1270, forse Ang. lat. 1310, Ang. lat. 1347, forse Ang. lat. 1365, Ang. lat. 1749, Ang. lat. 1857, Ang. lat. 1941, Ang. lat. 1964.

1967, Ang. lat. 227b, Ang. lat. 2277, Ang. lat. 2355). Lo stesso Novelli, non rompendo la pratica dei molti bibliotecari agostiniani che lo avevano preceduto, lasciò i suoi libri manoscritti all'Angelica (Ang. lat. 1846/18-24, Ang. lat. 1884, Ang. lat. 2119-2125, Ang. lat. 2127-2130, Ang. lat. 2188, Ang. lat. 2202, Ang. lat. 2288/9, Ang. lat. 2312/13, Ang. lat. 2313/1, 3, 4, 6, Ang. lat. 2321, Ang. lat. 2322, Ang. lat. 2349-2354, Ang. lat. 2356-2360, Ang. lat. 2368-2369, Ang. lat. 2399/2-3, Ang. lat. 2401, Ang. lat. 2403).

Ancora a Novelli si deve l'acquisto degli ultimi codici orientali della biblioteca, sicuramente gli Ang. or. 86, Ang. or. 87 (oltre ai già citati 88 e 88bis), Ang. or. 89, Ang. or. 90, Ang. or. 93, Ang. or. 94, Ang. or. 96, Ang. or. 97, Ang. or. 99.

Nessun altro bibliotecario laico dell'Angelica volle o ebbe i mezzi per sostenere una così organica attività di incremento del patrimonio librario manoscritto; di successive acquisizioni, l'unica veramente cospicua è quella degli autografi di Gigi Zanazzo, poeta romanesco (1860-1913), voluta da Francesco Barberi (1905-1988), oggi negli attuali manoscritti Ang. lat. 2410-2420 e quelle – sempre sotto la direzione di Barberi – dei carteggi dell'archeologo Felice Barnabei (1842-1915) e di Domenico Gnoli (1838-1915), poeta e direttore dell'Angelica tra 1910 e 1915.

Alla volontà di Ettore Novelli si deve infine l'ordinamento dei manoscritti in tre fondi separati, greco, latino e orientale e l'attribuzione delle nuove segnature, che attualmente sono in uso.

[estratto da E. Sciarra, Breve storia del fondo manoscritto della Biblioteca, in «La Bibliofilia» 111, 3, 2009, pp. 251-281.]

**Numero delle segnature registrate in Manus:** 99

**Numero delle schede:** 99 - [Sfoggia le schede](#)

# Collection-level description

Beschreibung der Sammlung **als Ganzes**

- Offenbart implizites Wissen



# Collection-level description

Beschreibung der Sammlung **als Ganzes**

- Praktisch: "*Es ist praktisch und wirtschaftlich grosse Massen von archäologischen und naturwissenschaftlichen Materialien auf dieser Ebene zu verwalten*"



# Collection-level description

Beschreibung der Sammlung **als Ganzes**

- Bewerten der Bedeutung
- Hilfe bei der Auswahl und dem Zugriff auf einzelne Elemente

*"Die Geschichte wird am besten erzählt, indem man das Material zusammen und nicht als einzelne Teile berücksichtigt".*





# Collection-level description

Beschreibung der Sammlung **als Ganzes**

Eine **strukturierte** Sammlungsbeschreibung unterstützt dazu:

- Finden
- Sammlungsübergreifende Suche
- Management (insb. gemeinschaftliches)
- Sammlungsentwicklung (z.B. Ankaufplanung)
- Datenaustausch

Sie ist besonders wichtig für die **digitale Sammlungen**

# Collection-level description standards

## RSLP Collection Description

2000

This project worked with other [RSLP projects](#), enabling them to describe their collections in a consistent and machine readable way. Based on a thorough modelling of collections and their catalogues, the project developed a collection description metadata schema and associated syntax using the Resource Description Framework (RDF). We developed a simple Web-based tool in order that projects can describe their collections.

### Key deliverables

#### Model

[An Analytical Model of Collections and their Catalogues](#) [final version]

#### Schemas

a document describing the [RSLP collection description schema](#) and the context model upon which it is based

#### Simple editing tool

a simple Web-based [collection description tool](#). Some information about [other tools](#) is also available.

#### Data entry guidelines

a document providing a set of [data entry guidelines](#) for those using the RSLP collection description schema - includes a [list of collection types](#).

#### Prototype search service

a Web-based demonstrator, enabling searches to be made across a range of collection descriptions gathered from RSLP projects.

#### Concertation days and events

- [First RSLP Collection Description Concertation Day](#) - SOAS, 22 Sept 1999
- [Second RSLP Collection Description Concertation Day](#) - The Charity Centre, 18 Feb 2000
- [Collection Description Working Group](#) - 23 March 2000
- [ISAD\(G\) - Functional Requirements for the Bibliographic Record](#) - 7 April 2000
- [RSLP Collection Description Schema](#) - 17 April 2000
- [RSLP Collection Description Schema](#) - 17 April 2000
- [RSLP Collection Description Schema](#) - 17 April 2000

### News

- A [report on the 3rd RSLP Collection Description Concertation Day](#) is now available
- [RSLP Collection description](#)  
Andy Powell, Michael Heaney, and Lorcan Dempsey - September 2000.  
*D Lib Magazine*, September 2000.
- [Relationship to ISAD\(G\) and the Archives Hub](#) - a note on the relationship between the RSLP collection description schema and ISAD(G)EAD.

### Project proposal

[Collection Description - Study, Recommendation, Specification](#)

### Background information

- [Dublin Core](#) (UK minor)
- [ISAD\(G\)](#)
- [IFLA Functional Requirements for the Bibliographic Record](#)
- [Simple Collection Description](#) - draft report of the eLib Collection Description Working Group
- [UKOLN collection level description Web pages](#)
- [Resource Description Framework](#)

### People working on RSLP Collection Description

[Andy Powell](#)  
[Michael Heaney](#) ([university-leamings.ac.uk](mailto:mheaney@university-leamings.ac.uk))  
[Lorcan Dempsey](#)



NISO Standards

Z39.91  
Designation - Title  
Year  
Project Type  
Current State  
Abstract

Z39.91 - 200X - Collection Description Specification  
200X  
NISO Standard  
Trial Stage  
DRAFT STANDARD FOR TRIAL USE: Period: November 1, 2005 - October 31, 2006  
This draft standard defines a means of describing collections, where a collection is defined as an aggregation of items.  
The draft standard takes the form of a Dublin Core Application Profile, a specification of how metadata terms from the Dublin Core metadata vocabularies and from other metadata vocabularies, some constructed for use in association with this Dublin Core application profile, are used to construct a description of a collection, in accordance with the DCMI Abstract Model.  
It also specifies an XML binding for serializing such descriptions for interchange between applications.

Pagination  
Managing Topic Committee  
Managing Working Group  
Final Document (PDF)

0  
Content and Collection Management Topic Committee  
Metasearch Initiative - TG2 - Collection Description  
Z39.91-DSFTU.pdf  
If you have any questions about the information presented here, please contact NISO's [admin@niso.stell](mailto:admin@niso.stell)

2005-2006

<http://www.niso.org/workrooms/mi/tg2/>

<http://www.ukoln.ac.uk/metadata/rslp>

**Dublin Core® Metadata Initiative**  
Making it easier to find information.

Home    Metadata Basics    DCMI Specifications    Community and Events    About Us

Enter keyword

2007

## Dublin Core Collections Application Profile

**Creator:** Dublin Core Collection Description Task Group

**Date Issued:** 2007-03-09

**Identifier:** <http://dublincore.org/groups/collections/collection-application-profile/2007-03-09/>

**Replaces:** <http://dublincore.org/groups/collections/collection-application-profile/2006-08-24/>

**Is Replaced By:** Not applicable

**Latest Version:** <http://dublincore.org/groups/collections/collection-application-profile/>

**Status of Document:** This is a Dublin Core Application Profile.

**Description of Documents:** This document describes the application profile for collection-level description developed by the Dublin Core Collection Description Task Group.

<http://www.dublincore.org/groups/collections/collection-application-profile/>

# Collection-level description standards

## <ead> Encoded Archival Description Version 2002 Official Site

### general information

- > [Background on EAD development](#)
- > [Design principles for enhancement of the EAD](#)
- > [Technical Subcommittee on EAD](#)
- > [Other Sites related to EAD](#)

### version 2002 - current

- > [EAD 2002 Schema](#)
- > [EAD DTD, version 2002](#)
- > [EAD Tag Library \(with examples and crosswalks\), version 2002](#)
- > [EAD Tag Library, version 2002](#) [PDF - 315 p., courtesy Society of American Archivists]

1998, 2002

### version 1.0 (1998) - superseded documentation

- > [EAD Tag Library, version 1.0 \(1998\)](#)
- > [EAD Application Guidelines, version 1.0 \(1998\)](#)

### Encoded Archival Context

- > [Encoded Archival Context - Corporate Bodies, Persons, and Families](#)

### tools and helper files

A variety of tools and helper files for a number of different XML authoring and editing applications is available at the SAA EAD Roundtable's Web site. These tools will be kept up to date with the current versions of the software with which they are intended to be used:  
<http://www.archivists.org/saagroups/ead/>

### news and articles

- > [EAD Revision Under Way](#)
- > [EAD Revision Documentation via SAA](#)
- > [EAD 2002 Schema Now Available](#)
- > [EAD 1.0 to 2002 Conversion Tools](#)

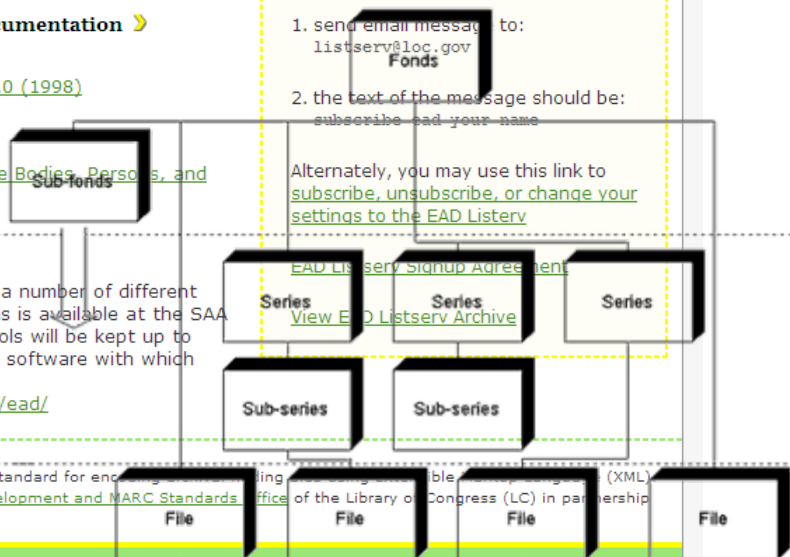
### ead listserv

An unmoderated listserv (ead@loc.gov) is open to developers and implementers of the EAD DTD and schema. To subscribe to the forum:

1. send email message to: [listserv@loc.gov](mailto:listserv@loc.gov)
2. the text of the message should be: `subscribe ead your name`

Alternately, you may use this link to [subscribe, unsubscribe, or change your settings to the EAD Listserv](#)

MODEL OF THE LEVELS OF ARRANGEMENT OF A FONDS



The EAD Document Type Definition (DTD) is a standard for encoding archival finding aids in Extensible Markup Language (XML). The standard is maintained in the [Network Development and MARC Standards Office](#) of the Library of Congress (LC) in partnership with the [Society of American Archivists](#).





## What's Here?

Digital Collections and Content contains descriptions of digital resources developed by IMLS grantees. Examples of what you will find here include: photos of kids hugging taxidermy from *Heritage Colorado*, Walt Whitman reading his own poetry from the *Whitman Archive*, celebrations of Donkey Derby Days from Collaborative Digitization Program's *Heritage Colorado*, letters which foretell the Cherokee Trail of Tears from the University of Tennessee's *Tennessee Documentary History*.

## Project News

- **Opening History:** U.S. History Resources from Libraries, Museums, and Archives
- **Sowing Culture:** Selections from the IMLS Digital Collections and Content project
- **IMLS DCC project blog**
- **Current research**

## About the Project

The Digital Collections and Content (DCC) project is investigating and implementing a systematic approach to developing useful, meaningful, and usable digital collections. This collaboration with IMLS and IMLS-funded projects supports IMLS' mission to create a nation of learners and sustain cultural heritage. [Learn more about the project.](#)

## Digital Resources From Libraries, Museums, and Archives

Includes collections from model projects supported by IMLS that help preserve library resources, develop best practices for digitization, and digitize collections of national value.

### Search For Items

[Advanced Search for Items](#)

### Browse Collections By:

Subject	Object	Place
Social Studies (448)	image (395)	United States (nation) (413)
Arts (210)	text (274)	Midwest U.S. (general region) (180)
Science (89)	physical object (115)	Illinois (state) (113)
Language Arts (43)	sound (61)	Southern U.S. (general region) (74)
Religion (37)	Interactive Resource (30)	Europe (continent) (38)
Vocational Education (37)	moving image (19)	Asia (continent) (26)
<a href="#">View all subjects...</a>	<a href="#">View all objects...</a>	<a href="#">View all places...</a>

also browse by: [Title](#) | [National Leadership Grant Project](#) | [Hosting Institution](#)

[Search Collections Only](#)

Currently 525 collection records. Last record updated On 9/3/2011.

<http://imlsdcc.grainger.uiuc.edu/>





"A centre of excellence in digital information management, providing advice and services to the library, information and cultural heritage communities."

UKOLN IS BASED AT THE [UNIVERSITY OF BATH](#).

## Collection Description Focus

### What CD Focus Does

The aim of the Focus is to improve co-ordination of work on collection description methods, schemas and tools, with the goal of ensuring consistency and compatibility of approaches across projects, disciplines, institutions, domains and sectors. The Focus provides support for projects actively involved in collection description work and for those investigating or planning such work. One of the major strands of this support work has been the development of the CLD (Collection-Level Description) [Online Tutorial](#). This has been created both as an aid to Implementers and as a tool for training.

The Focus will continue to promote and facilitate the use of the RSLP Collection Description Schema as the basis for collection description implementations. The Focus will also work with the Dublin Core Collection Description Working Group on the development of a DC-based schema for collection-level description, using the collection description attributes of the RSLP CD Schema as a starting point. Implementers are encouraged to join the DC-Collections list and contribute to the work.

The Focus will be supporting a range of initiatives including the continuing NOF Digitisation of Learning Materials Programme, Peoples Network Programme, Resource Regional Cross-Domain research projects, British Library Co-operation and Partnership Programme and a range of JISC projects. The Focus will also be seeking to engage with the FE sector through contact with the Regional Support Centres.

### About Us

The work of the Focus was carried out by [Ann Chapman](#) until March 2011. Other UKOLN staff working on related projects provide support through expertise and knowledge.

During the period June 2001 - July 2004, when it was separately funded, the Focus reported to a [Management Board](#). Focus work now forms part of UKOLN core activities.

The Focus is located within [UKOLN](#) and physically based at the [University of Bath](#).

The staff at UKOLN are supported by their partners in the CD Focus Initiative, the [Archives Hub](#) and the [mda](#).

The Focus can be contacted at [ukoln@ukoln.ac.uk](mailto:ukoln@ukoln.ac.uk)

<http://www.ukoln.ac.uk/cd-focus/>

### dissemination

- » [Events](#)
- » [Presentations](#)
- » [Publications](#)

### resources

- » [Extending the Collection Model](#)
- » [FAQs](#)
- » [Glossary](#)
- » [Mailing Lists](#)
- » [Tutorial](#)

### useful LINKS

- » [Background resources](#)
- » [Projects](#)
- » [Tools](#)



search >

recent news >

institutions >

## welcome to rascal

# RASCAL

Research and Special Collections Available Locally

RASCAL is an electronic gateway to research in Ireland. You can use this web-site to see information about the wide range of research collections held in libraries, museums and archives in the region. The Directory consists of comprehensive descriptions of collections available to researchers in the Humanities and Social Sciences recording details of content, location, format, and access. Links to on-line catalogues and other digital resources are provided where appropriate.

### featured collection

[Government Publications](#) Published annual volumes of Primary and Secondary Education from 1920 to 1950



Use the Archives Hub to find unique sources for your research. The Archives Hub enables you to search across a wealth of archives held at nearly 200 institutions in England, Scotland and Wales.

Keywords

Discover more about the Hub and how to be part of the Hub community.

[Find out more](#)

Use the Hub to enhance your research.

[Find out more](#)



[Find out more](#)



[Find out more](#)

2. You can ENTER A SEARCH TERM in the [Cornucopia Quicksearch](#)

3. You can use the [ADVANCED SEARCH FACILITY](#) to find collections near to you

Cultural heritage institutions can also add and/or update their own collections. The [Cornucopia](#) is developed and managed by the [MLA](#).

[Credits](#) | [Home](#) | [Help](#) | [About](#) | [News](#) | [Privacy](#)

Site design by Orange

# CECILIA

Find Music Collections in UK and Ireland

Search:   [Advanced Search](#)

[Home](#) | [Time](#) | [People](#) | [Place](#) | [Subject](#) | [Tradition](#) | [Institution](#)

Welcome to Cecilia

Mapping the music resource of the UK and Ireland



SCONE was an RSLP project to aid researchers by extending existing collaborative collection management (CCM) work carried out within the SCURL framework into new areas and investigating effective models for building and sustaining a co-ordinated distributed nationwide resource.

SCONE Project Final Report now available [Go!](#)

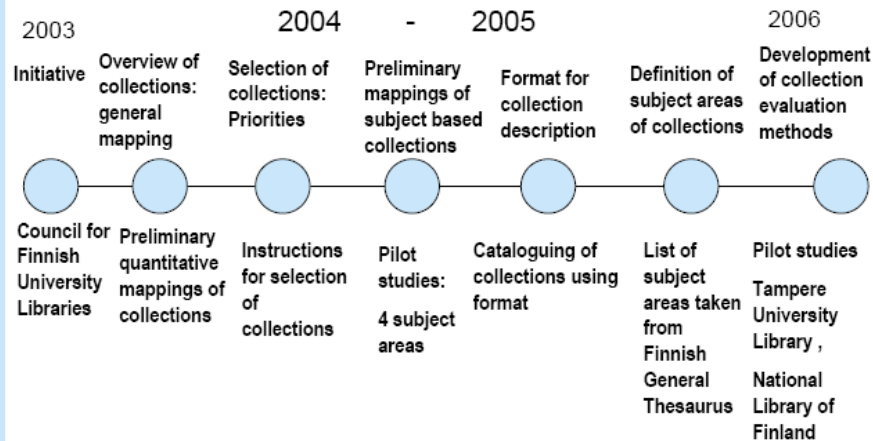
Scottish Collections Network Service now live [Go!](#)

SCAMP now live [Go!](#)



This month we highlight the magic collections within the National Fairground Archive. The NFA are holding an open day in September to highlight these collections and bring the art of magic alive with the help of local magicians.

## Collection Map Project: Life-Cycle



Welcome



Search OAC  go

> Home > Museum of Performance and Design, Performing Arts Library

Share / Save

Collection



Staff Directory Contact CDL Report a Problem System Status

Collection

Search  go

Collection

October 14, 2011 About CDL Services and Projects Information Gateways Committees and Groups News and Media

Get It

CDL Home > Services and Projects > Digital Special Collections > Calisphere and OAC Technical Information

Digital Special Collections

- Online Archive of California (OAC)
- Calisphere
- UC Shared Images
- Become a Contributor
- For Contributors
- Technical Information**
- Projects
- Publications and Presentations

## Calisphere and OAC Technical Information

### Supported Content Types in Our Repository

DSC hosts four major types of digital content:

- EAD collection guides
- METS digital objects
- UC website URLs
- MARC collection guide and item-level records

These digital collections are managed in a single repository with two separate publicly accessible web interfaces: the OAC and Calisphere. The repository contains over 14,000 EAD collection guides, 230,000 METS digital objects, 590 UC website URLs, and 12,000 MARC records.

Content in the repository conforms to the following criteria:

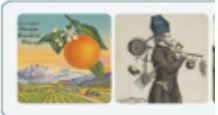
- Collection guides must be formatted using the Encoded Archival Description (EAD) standard, and must conform to the [OAC Best Practice Guidelines for EAD](#).
- Digital objects must be formatted using the Metadata Encoding and Transmission Standard (METS) standard, and must conform to the "Enhanced Service Level" specifications defined in the [CDL Guidelines for Digital Objects](#).
- Collection guides or item-level records in the MARC21 format. For recommendations on encoding MARC collection guides, see the [OAC Guidelines for Minimal Level MARC Records](#). We utilize the MARC Leader 07 field to differentiate between collection guides vs. item-level records, within the context of the OAC display.

### Quick Links

- eXtensible Text Framework (XTF)
- Lucene
- XSLT Stylesheets
- JPEG-2000
- LuraTech's Image Content Server

### Browse the Collections

By Title from A to Z  
0-9 A B C D E F G H I J K L M N O P Q R S T U V W X Y Z





## Discover Collections

- / History of Our Nation
- / Our Natural World
- / Society, Art & Culture
- / People & Places

You are here :: Home > Discover Collections

SEARCH OUR COLLECTIONS >

## Discover Collections

*Discover Collections* takes you on an online exploration of selected highlights of the Library's rich historical and contemporary collections. Encounter wonderful historical treasures and read intriguing stories about our history, environment, society and culture. Discover unique maps, paintings and photographs, letters and personal journals, books and newspapers representing just a small selection from the State Library's collections of over five million items.

Intrigued by what you find? Then delve deeper into the Library's collections via the links to related online material, exhibitions and additional resources for education, research and personal interest.

The generosity of the Library's [supporters](#) has enabled the development of these online collections by supporting the expansion of our digitisation program.

*Discover Collections* highlights the Library's role as a cultural destination and a proactive partner in knowledge creation.

Indigenous Australians are advised that *Discover Collections* may include images or names of people now deceased.

In development

Benefactor / Partner



### Australian agricultural and rural life

*Discover Collections: Australian Agricultural and Rural Life* will showcase selections from the Library's extensive collections to tell a range of stories about Australia's rural and regional development.



In development

Benefactor / Partner



### Australian Jewish community and culture

The online story *Australian Jewish Community and Culture* will focus on the journeys, settlement, activities and contributions of Jewish people to Australia and their influence on Australian culture and socio-economic development from the arrival of the First Fleet through to the present day.



In development

Benefactor / Partner



BROWSE

## Digital Collections

BY SUBJECT

BY SPATIAL COVERAGE

BY PERIOD

## Institutions

BY INSTITUTION TYPE

BY LOCATION

## Services

BY AUDIENCE

BY SUBJECT

BY SPATIAL COVERAGE

BY PERIOD

BASKET

ABOUT MICHAEL

STORIES

LATEST EDITORIALS

CLICKABLE MAP



HELP

USER PREFERENCES

ADVANCED SEARCH

Quick  
search

Home

### Explore the European digital cultural heritage

Through the multilingual MICHAEL service you can find and explore digital collections from museums, archives, libraries and other cultural institutions from across Europe. Whether you are interested in art or archaeology, family history or planning holidays, the Romans or modern History, MICHAEL can show you what is available.



STORIES

▶ [Read some stories from users of the MICHAEL European Portal](#)

### LATEST EDITORIAL - DESIGN IN EUROPE

A "cult" book written in 1936 by the art historian Nikolaus Pevsner identified William Morris and his *Arts and Crafts Company*, which was devoted to conceiving and producing artistic factory-made objects and textiles, as the first pioneer of industrial design.

▶ [Read more](#)



Collection of the Week

King Matthias' Library

**Ca. 10.000 digitale Sammlungen von ca. 4000 kulturellen und wissenschaftlichen Einrichtungen in ganz Europa**

**(entsprechen vielen Millionen Objekten)**

<http://www.michael-culture.org>



# Michael Deutschland

Multilingual Inventory of Cultural Heritage in Europe

Über MICHAEL Meldeformular Kontakt Impressum Sitemap

Sammlungen & Bestände

Suche

Start >

## SAMMLUNGEN & BESTÄNDE

- nach Thema
- nach Ort
- nach Zeitraum

## INSTITUTIONEN

- nach Art

## ANGEBOTE

- nach Zugang
- nach Zielgruppe
- nach Sprache

Herzlich Willkommen bei MICHAEL Deutschland - Multilingual Inventory of Cultural Heritage in Europe

Das **deutsche MICHAEL-Portal** ist ein Online-Verzeichnis, das digitale Sammlungen und Bestände von Archiven, Bibliotheken und Museen in Deutschland nachweist und diese auch an das europäische MICHAEL-Portal liefert.

Wir führen Sie zu digitalisierten Handschriften, Büchern und Urkunden, zu Museumsobjekten wie Münzen oder Skulpturen, zu Fotos, Gemälden, technischen Plänen, Landkarten und vielem mehr. MICHAEL ermöglicht einem internationalen Publikum den Zugang zu diesen vielfältigen Informationen. Forscherinnen und Forscher werden ebenso angesprochen wie Kunstliebhaber, Schüler, Studenten, Journalisten und Lehrer.

In Deutschland sind sieben Kulturinstitutionen am EU-Projekt MICHAEL Plus, in dessen Rahmen das deutsche Portal aufgebaut wird, beteiligt: die Bayerische Staatsbibliothek, das Bundesarchiv, das Deutsche Museum, die Deutsche Nationalbibliothek, das Landesarchiv Baden-Württemberg, die Senckenbergische Naturforschende Gesellschaft und die Stiftung Preußischer Kulturbesitz.

Entdecken Sie MICHAEL

<http://www.michael-portal.de>

# Hindernisse zur weiteren Entwicklung

Nach 2008 wird die Entwicklung langsamer...



Gründe:

- Mangel an gemeinsamen Verfahren und international vereinbarten Regeln zur Sammlungsbeschreibung
- Mangel an effektiver Verbindung zwischen Objekt-Ebene und Sammlungsebene
- Mangel an eindeutiger Identifizierung von Sammlungen



# Auf der Suche von Lösungen

Verschiedene Ansätze:

- Kombination der beiden Ebenen (Objekts- und Sammlungsebene), um die Qualität von Suchen und Finden zu verbessern
- Entwicklung eines Logik-basiertes Framework für die Übertragbarkeit von Sammlungsmetadaten auf Objekte
- Semantische Integration über CIDOC / CRM

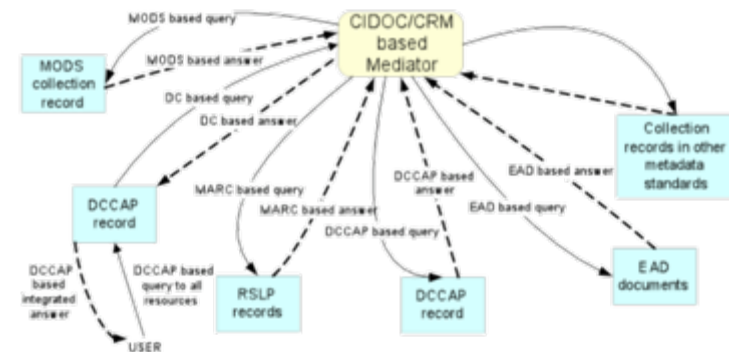


Figure 1. An ontology based mediator

# ISO 27730



International  
Organization for  
Standardization

International Standards for Business, Government and Society

Search >>

Home

Products

Standards development

News and media

About ISO

For ISO Members

FAQs

Fr | Ru

ISO Store

Products > ISO Standards > By TC > TC 46 Information and documentation > SC 9

ISO Store

ISO Standards

By ICS

>>By TC

How to use the ISO  
Catalogue

Standards in action

Management and  
leadership standards

The ISO portfolio

FAQs

Country codes (ISO  
3166/MA)

Directory of aerospace  
standards

Publications and e-products

ISO Concept Database  
(ISO/CDB)

Copyright

## ISO 27730



Information and documentation -- International standard collection identifier (ISCI)

### General information

Number of Pages: 10

Edition: 1 (Monolingual)

ICS: [01.140.20](#)

Status: Under development

Stage: [60.00](#) (2011-09-21)

TC/SC: [TC 46/SC 9](#)

### These standards could also interest you

- [ISO 25964-1:2011](#)  
Information and documentation --  
Thesauri and interoperability with  
other vocabularies -- Part 1:  
Thesauri for information retrieval
- [ISO 690:2010](#)  
Information and documentation --  
Guidelines for bibliographic  
references and citations to  
information resources
- [ISO 10957:2009](#)  
Information and documentation --  
International standard music  
number (ISMN)

# ISCI:

ISIL der Organisation

+

Collection Identifier String  
(spezifisch für jede Einrichtung)



Jede Sammlung muss auch beschrieben werden

# International Standard Collection Identifier ISO 27330

- Einrichtungsspezifischer Collection Identifier String:
  - Mindestens ein Unicode Zeichen
  - Unbegrenzte Länge
  - Zeichen, die nach der URI Specification nicht erlaubt sind, müssen encoded werden
- Gedächtnisorganisationen können vorhandene lokale Collection Identifiers verwenden, vorausgesetzt:
  - Sie entsprechen der ISCI Syntax und Struktur;
  - Sie verwenden geeignetes Encoding wenn nötig



# International Standard Collection Identifier

## ISO 27330

- Eine **ISCI Registration Authority** wird das System koordinieren
- In Zusammenarbeit mit Nationalen ISCI Agenturen
- Die ISCI Registration Authority wird ein System aufrechterhalten, zu:
  - Zuweisung und Nutzung von ISCIs
  - Zusammentragen von sammlungsbezogenen Metadaten in das globale ISCI Verzeichnis

# International Standard Collection Identifier ISO 27330

- Jede Gedächtnisorganisation wird ISCIs **unabhängig** zuweisen dürfen, vorausgesetzt dass die Organisation **über ein ISIL verfügt**
- Sie soll **sammlungsbezogene Metadaten** der nationalen oder internationalen ISCI Registration Authority zur Verfügung stellen

# Standard-Identifizierung von Sammlungen: Vorteile

- Durch den Einsatz von ISCI als Element in der Objektbeschreibung werden Kontext-Informationen automatisch mit der Objektbeschreibung verbunden
  - ⇒ **Verbindung zwischen Objekt- und Sammlungsebene** erfolgt
  - ⇒ Informationen brauchen nicht wiederholt zu werden
  - ⇒ Objekte, die derselben Gruppe angehören, werden automatisch miteinander durch die gleiche ISCI verknüpft

**“Identifiers – The keys to cultural information integration”**

(G. McKenna)

# Standard-Identifizierung von Sammlungen: Vorteile

## Persistente Identifizierung:

- ISCIs werden leicht in URI verwandelt
  - Sammlungen werden online eindeutig durch geeignete URIs identifiziert
  - URIs werden in Sammlungsbeschreibungen aufgelöst
- URIs könnten durch einen Resolving-Dienst verwaltet werden, und dadurch persistent werden



# Standard-Identifizierung von Sammlungen: Vorteile

- Durch standard online Identifizierung können Sammlungsbeschreibungen leicht als **Linked data** veröffentlicht werden

## Linked data principles according to T. Berners-Lee

- Use URIs as names for things
- Use HTTP URIs so that people can look up those names.
- When someone looks up a URI, provide useful RDF information.
- Include RDF statements that link to other URIs, so that they can discover related things.



# Sammlungsbeschreibungen als Linked Data

## Vorteile

- Sammlungsbeschreibungen bieten Kontext und Bedeutung dem Semantic Web an
- Je mehr sie mit anderen Ressourcen verknüpft sind, desto effektiver sie sind
- Sammlungsinformationen verfügbar für Entwicklung von Apps



# Zusammenfassung

- Sammlungsbeschreibung ist nicht genug praktiziert
- Sammlungsbeschreibung hat Potential!
- ISCI bietet uns eine Möglichkeit an, das ganze Potential von Sammlungsbeschreibung zu nutzen

giuliana.defrancesco@beniculturali.it  
g.defrancesco@smb.spk-berlin.de

